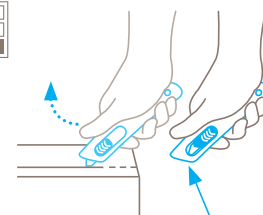


TECHNICAL DATA SHEET

SECUNORM SMARTCUT MDP NO. 110700

Safety technology



Automatic blade retraction – a high degree of safety

The automatic blade retraction of the SECUNORM SMARTCUT MDP guarantees a very high degree of safety from cut injuries. As soon as you have started to cut, take your thumb off the slider. The blade can thus withdraw back into the handle immediately after leaving the material being cut.



SMALL DISPOSABLE SAFETY KNIFE WITH AUTOMATIC BLADE RETRACTION.

Order No. 110700.02

Yes, a cutting tool can be this SMART. Metal detectable.

Make one cut with this knife and you'll know immediately why it's called a SMART cut. Its light and compact shape is SMART. The fact that it is suitable for almost all types of cutting material is SMART. What's also smart, is that you can use it in sensitive industries without thinking twice. Because its plastic handle is metal detectable and it has a stainless steel blade. Good to know, isn't it?

Can be metal detected

A cutting tool, or parts of it, can get lost while working. But only for a short while. Because the plastic that can be detected by a metal detector ensures you can find it again quickly.

One way, two advantages

The SECUNORM SMARTCUT MDP is a disposable cutter. What that means for you: no risk of injury when changing the blade. The blade also cannot get lost in the production process.

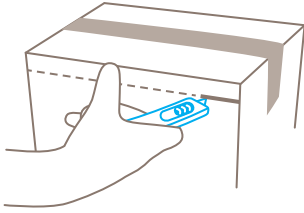
Slider on both sides

With the right hand? With the left hand? The question does not arise. Because we have put a slider on to the SECUNORM SMARTCUT MDP that is accessible from both sides. Choose for yourself!

Perfect handling

The product does not only look handy. Its small, rounded handle actually fits very well in your hand. What's more: the slider is fitted with grooves so that your thumb doesn't slip.

USAGE



PRODUCT FEATURES

Technical features



High safety



Metal detectable



X-ray detectable



Disposable knife



Abrasion resistant



Very ergonomic



Cutting depth



For right and left handers



Lanyard hole



Stainless

Main cutting materials



Cardboard: up to 2-ply



Wrapping, stretch, and shrink foil



Tape



Layers of foil or paper



Yarn, cord

Installed blade

Blade thickness 0.63 mm

BLADE CHANGE

The stainless steel blade cannot be changed.

SERVICES OFFERED



Sicherheitsposter



Trainingsvideo



Technisches Datenblatt



Beratung

PRODUCT AND PACKAGING DETAILS

| | | | |
|-------------------------------|--------------------------|---------------------------------|----------------------|
| Order No. | NO. 110700.02 | Packaging unit | 1 in single unit box |
| Knife size (L x W x H) | 110 x 12.5 x 25 mm | Size Single unit box | 113 x 10 x 28 mm |
| Weight knife | 23.5 g | Weight single unit box | 26.8 g |
| Basic material | Metal detectable plastic | EAN Code single unit box | 4002632917936 |
| Cutting depth | 11.6 mm | Quantity in outer pack | 20 knives |
| | | Size outer pack | 114 x 72 x 120 mm |
| | | Weight outer pack | 575.0 g |
| | | EAN Code outer pack | 4002632969256 |
| | | Customs tariff number | 82119300 |

SAFETY CERTIFICATE

| | |
|----------------------|--|
| Date of issue | 30.09.2020 |
| Certification | GS certificate NO. 180256-7070-55094-2020/2 |

Certificates and awards



SECURITY ADVICE

To ensure that you use your new MARTOR knife safely and most effectively, please read and note the following user-instructions. Please keep the written guide in a safe place so that you can access it at any time.

1. Usage advice: Please use the product carefully for described work only and not for any purposes other than those that are intended. Please take the correct handling and the proper use of the cutting tool into account in this regard.

2. Special application Instructions to avoid the danger of injuries: Only use cutting tools that are in perfect condition and have sharp, clean and undamaged blades. Employ the utmost care when handling the knives. CAUTION: The blade is sharp and can result in serious and deep cuts. Therefore, never reach into the blade! To reduce the danger of injuries, hold the hand that is being used to restrain and stabilise the

cutting base in such a manner that the restraining hand or even other body parts are not endangered in the event that the knife slips. Do not modify this product in any way. Modifications of any kind may impair product safety. CAUTION: The risk of injury caused by manipulation of this product is extremely high. When both cutting edges are no longer sharp, dispose of the knife as general waste.

3. Non-use of the knife: Store the knife in a secure place.

4. Care instructions: Always keep the knife clean and do not expose it to unnecessary humidity to safeguard a long service life.

CAUTION: No liability will be assumed for consequential losses. Subject to technical changes and errors! This knife does not belong in the hands of children!

ACCESSORIES

BELT HOLSTER M

NO. 9921



What do you do with your cutting tools when you are not actually using them? The MARTOR BELT HOLSTER M is a robust holder that allows you to carry all midsize MARTOR knives as well as our safety scissors at all times. In addition, the interior and exterior pockets are designed to allow you to load different tools: for example you can carry an extra safety knife, a pen and a pack of blades. The MARTOR BELT HOLSTER is the ideal place to stow your tools safely when moving from A to B - and have them at hand, as soon as they are required.

BELT HOLSTER XXL

NO. 9924



The BELT HOLSTER XXL is a real space miracle. With it, you not only transport your MARTOR cutting tools safely from A to B. All other work utensils are always within reach. The BELT HOLSTER XXL has two large compartments: the inner one is lockable, the outer one is equipped with a knife safety device. You are also well equipped when it comes to carrying options. Choose flexibly between strap, Velcro fastener and clip.

TOOL RETRACTOR

NO. 9960



The TOOL RETRACTOR protects your cutting tool from loss and from falling down. Its core is the heavy-duty Kevlar cord that can be extended up to 90 cm. As soon as you let go of your knife, it is returned to you via the flexible cord. Your hands are free for other activities – the knife always remains at hand. The carabiner is designed for your belt loop, the steel cord at the other end fits through the eyelet of your cutting tool.

MDP TEST CARD SET

NO. 9910



There are five cards with different plastic balls in the MDP TEST CARD SET – between 2.5 mm and 8 mm in size. You can reliably test the effectiveness of your metal detectors using the „visiting card“.

MANUFACTURER

MARTOR KG | Lindgesfeld 28 | 42653 Solingen | Germany
T +49 212 73870-0 | info@martor.de | www.martor.com