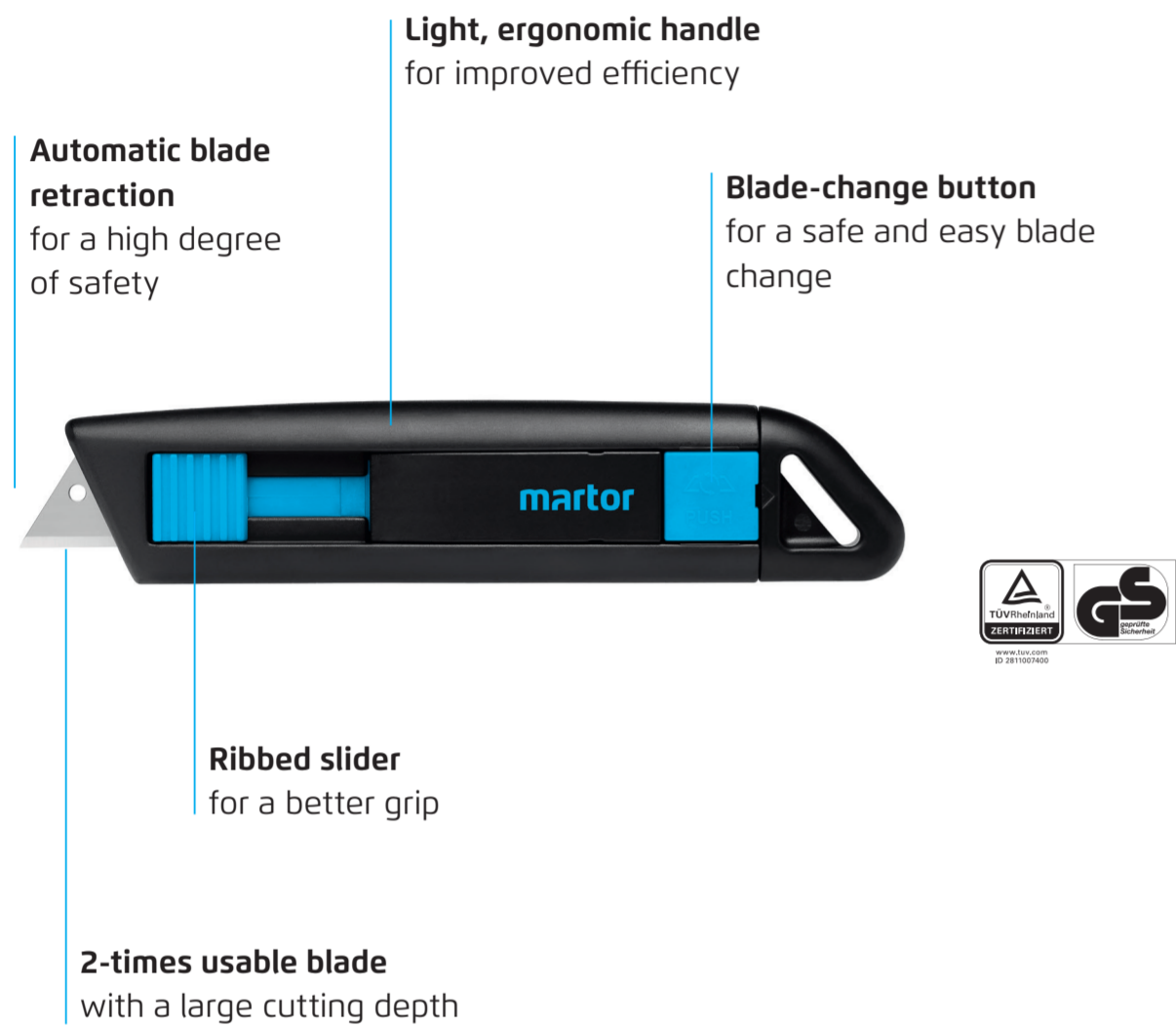
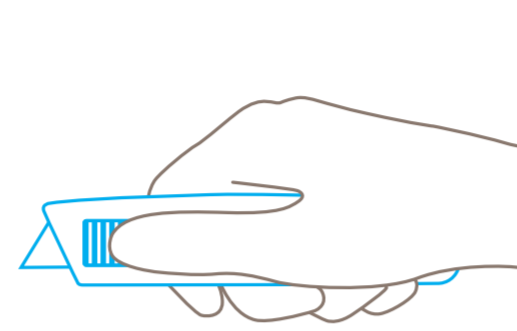


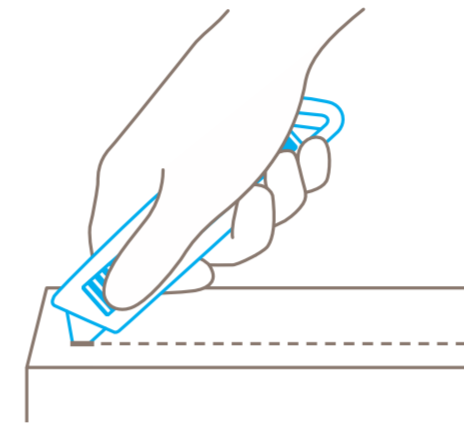
## SECUNORM PROFI LIGHT



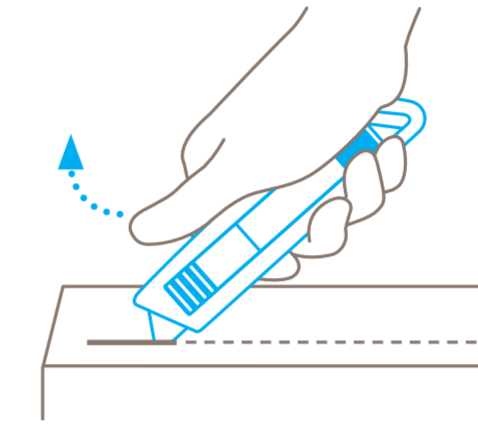
### USAGE



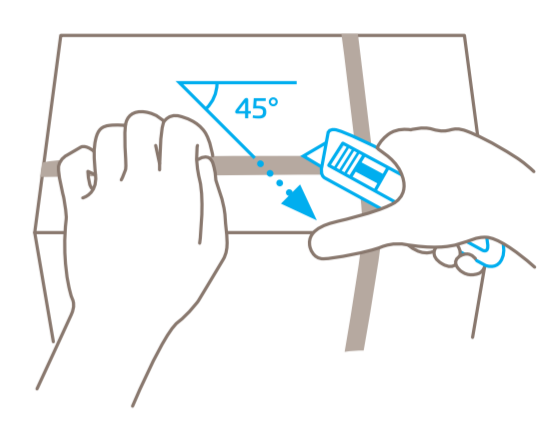
Use the slider to **engage the blade** for cutting.



**Pierce** into the cutting material to cut.

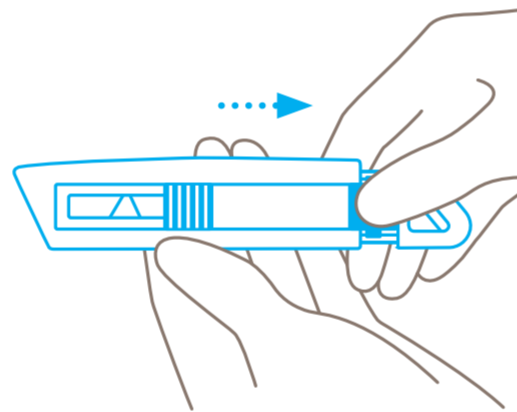


Always remove your **thumb from the slider** to ensure automatic blade retraction.

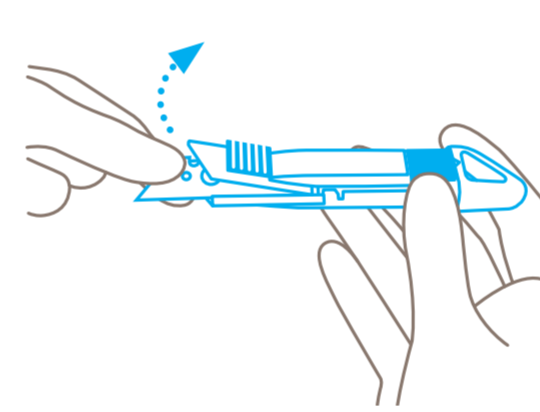


For best results, cut plastic strapping band **diagonally** (at a 45° angle).

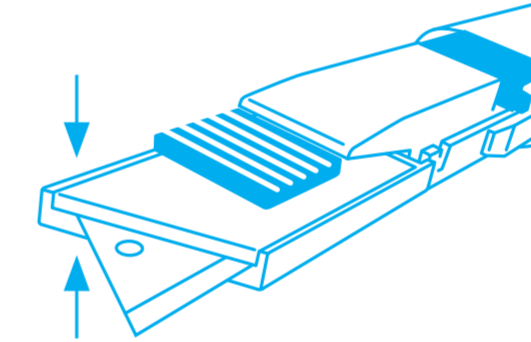
### BLADE CHANGE



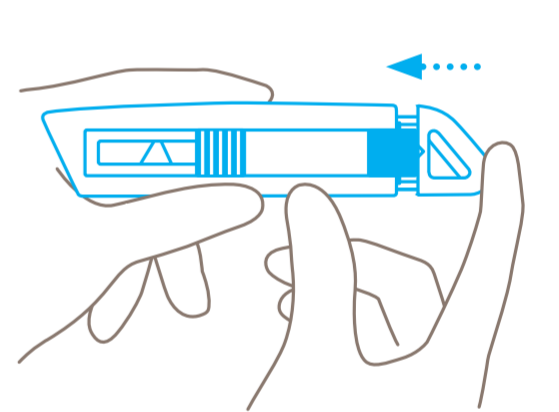
Press the blade-change button and **pull out the plastic insert**.



Take hold of the blade and nudge the blade cover open: either **rotate or replace** the blade.

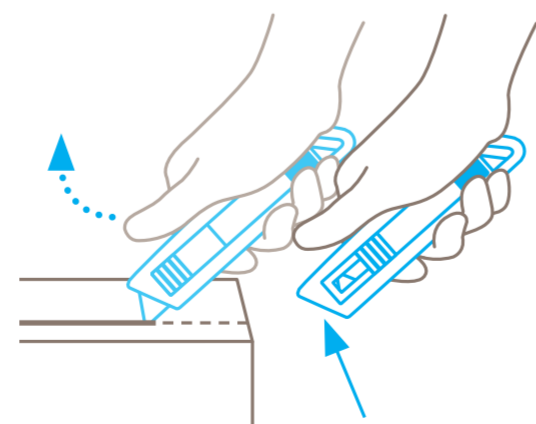


Be sure to close the blade cover so that it **lies flush** with the blade holder.



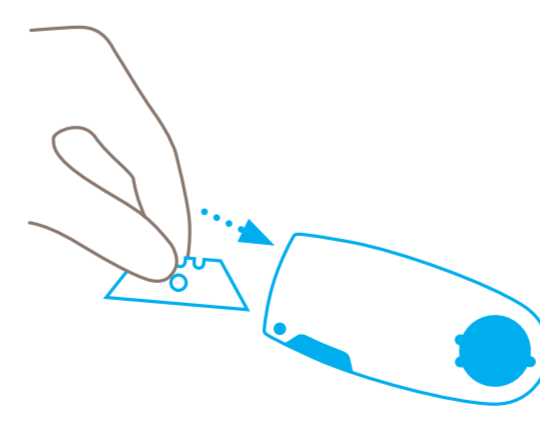
Finally, push the plastic insert back into the handle until you **hear it click into place**.

### PROTECTION OF USER

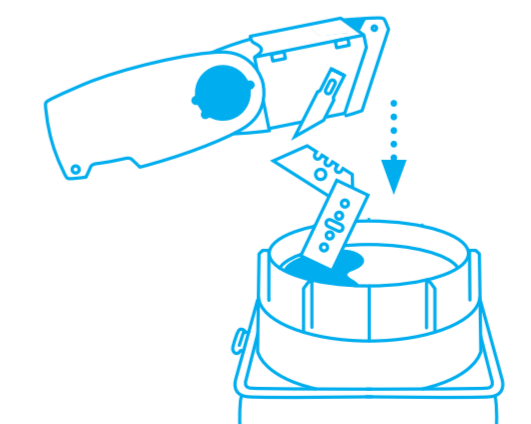


Following cutting, the blade immediately retracts into the handle. Condition: you have **released hold of the slider**.

### DISPOSAL



Your **SAFEBOX** is the best place to store **used blades**.



When the SAFEBOX is full, **empty all contents** into your **RECYCLING BOX**.

**Please note:** to ensure your product always functions flawlessly, regularly remove any build-up of cutting material.