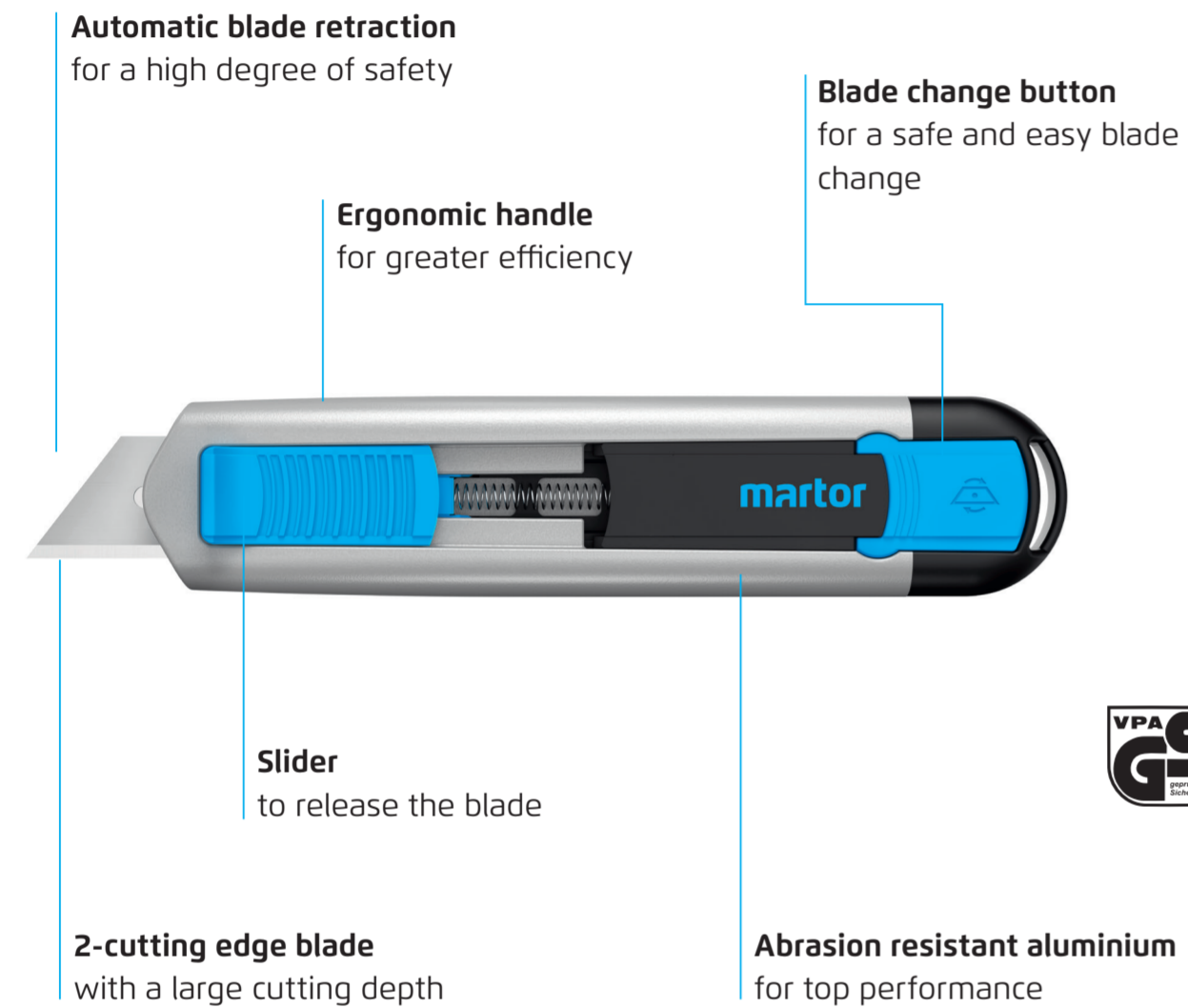
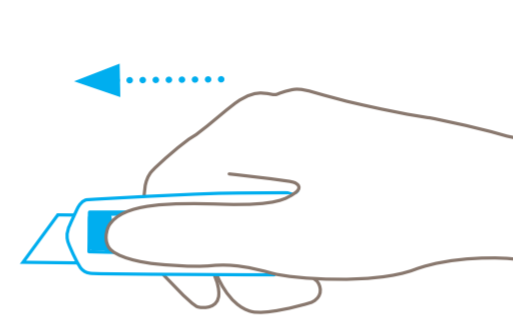


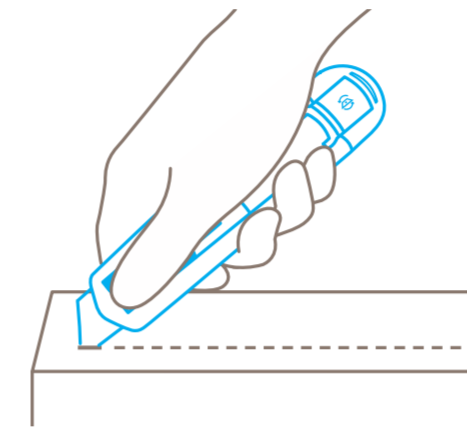
SECUNORM 525



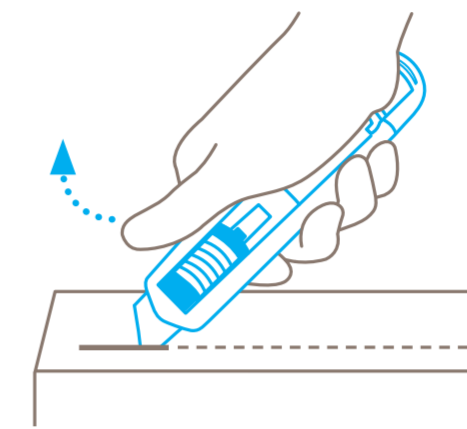
USAGE



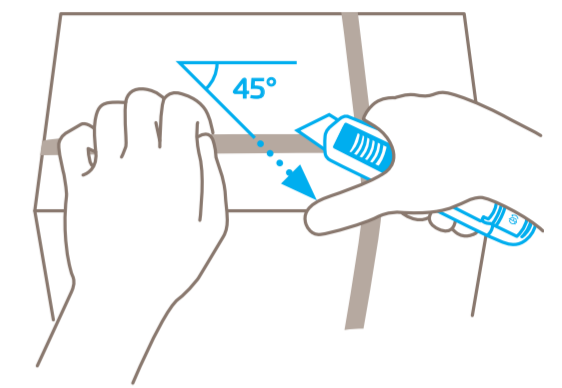
Use the slider to **engage the blade** for cutting.



Pierce into the cutting material to cut.

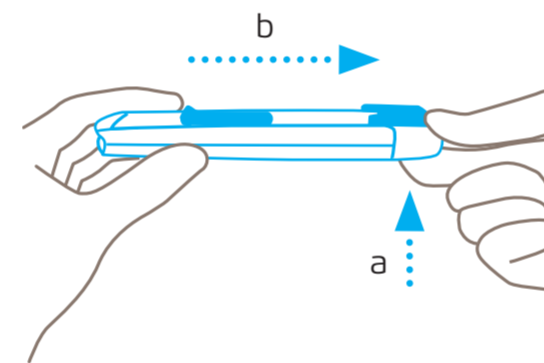


Always remove your **thumb from the slider** to ensure automatic blade retraction.

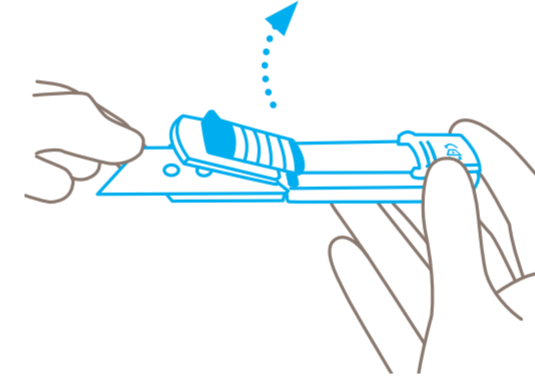


For best results, cut plastic strapping band **diagonally** (at a 45° angle).

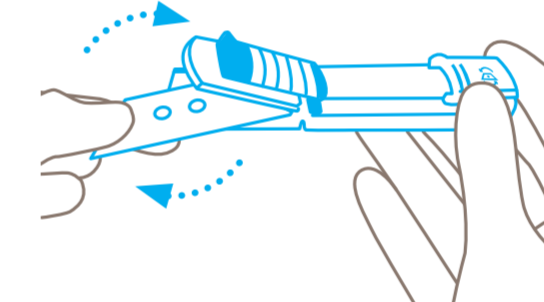
BLADE CHANGE



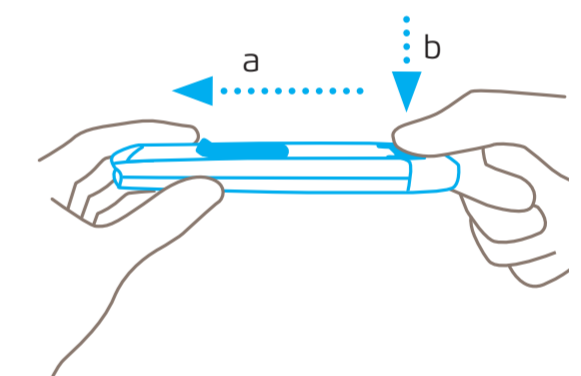
Press the blade change button **pushing up from below** and remove the plastic insert from the rear of the handle.



Hold the **blunt** side of the blade and use it to lift the blade cover upwards. The cover remains in the open position.

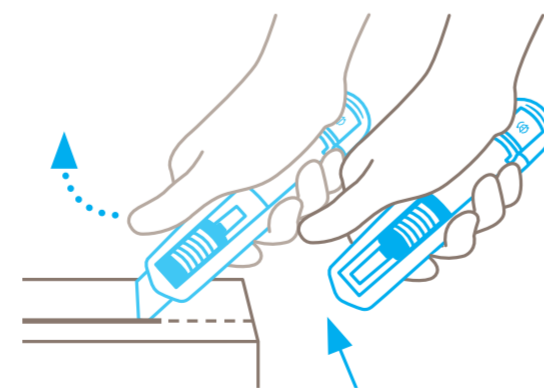


Reverse or replace the blade. Make sure you place the blade **exactly on the locating lobes**. Left-handers turn the blade 180°.



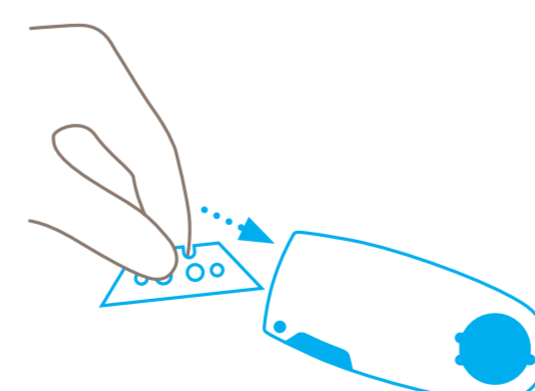
Close the blade cover and push the plastic insert back into the handle and then **press down** on the blade change button.

PROTECTION OF USER

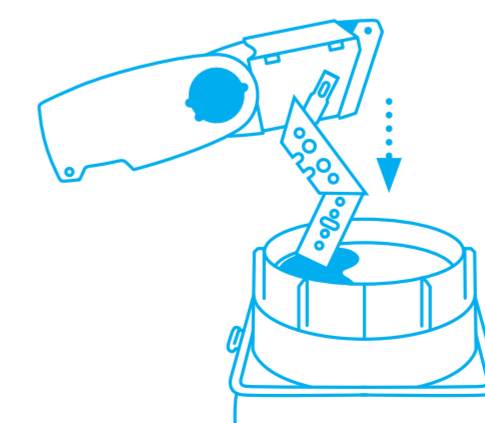


Following cutting, the blade immediately retracts into the handle. Condition: you have **released hold of the slider**.

DISPOSAL



Your **SAFEBOX** is the best place to store **used blades**.



When the **SAFEBOX** is full, **empty all contents** into your **USED BLADE CONTAINER**.

Please note: To ensure your product always functions flawlessly, regularly remove any impurities. For additional safety, we recommend wearing gloves.