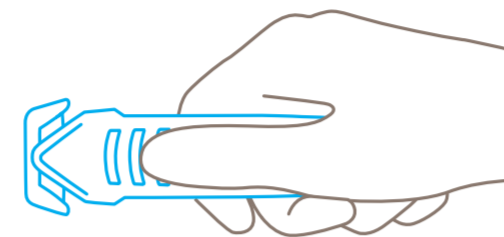


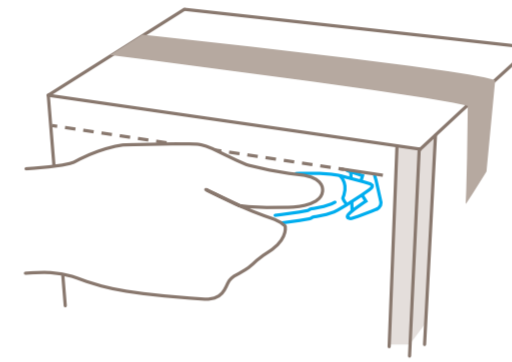
SECUMAX 145



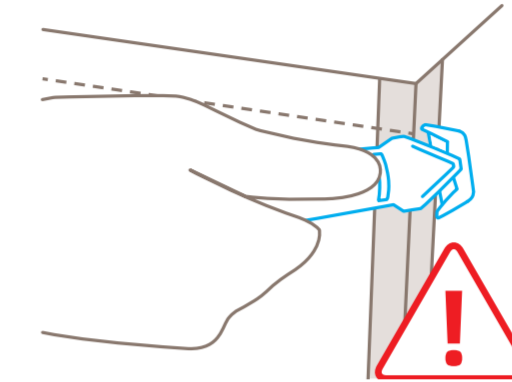
USAGE



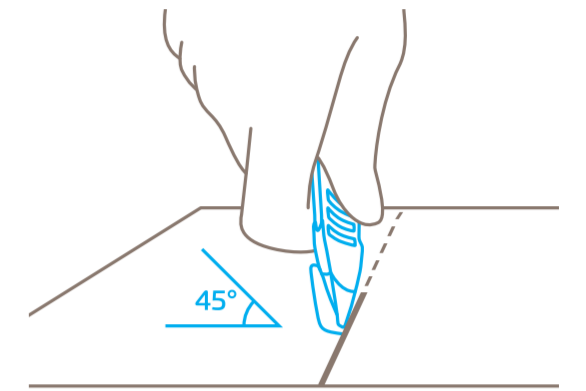
For the best possible grip, place your thumb on the **grooved surface**.



Pierce into the cutting material using the pointed nose of the knife.

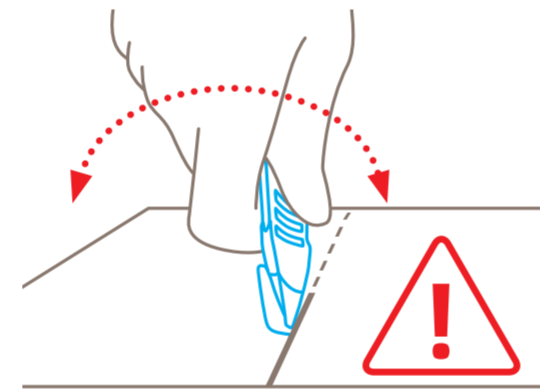


Do not lever against staples, or force into edge protectors!

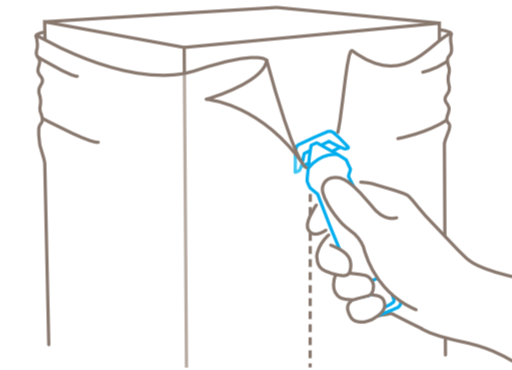


Hold the knife at a **slight angle** when cutting open cardboard boxes.

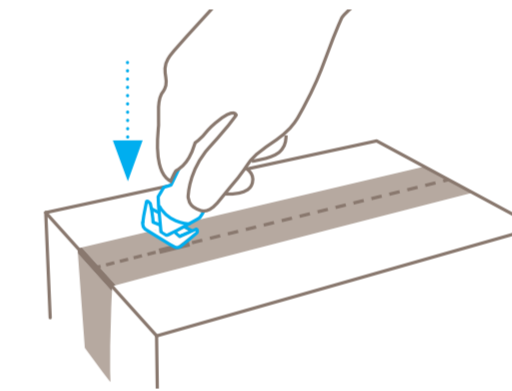
USAGE



If the blade head gets stuck, **don't forcefully lever** the knife!

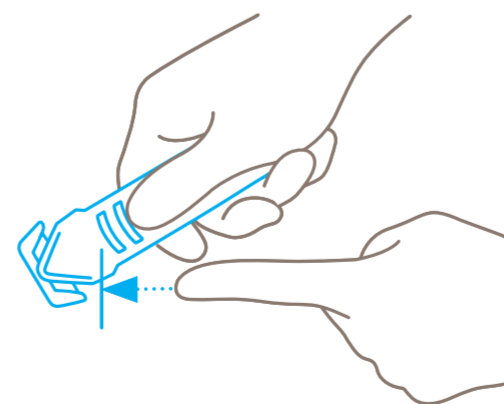


Use the **pointed nose** of the knife to pierce the film.



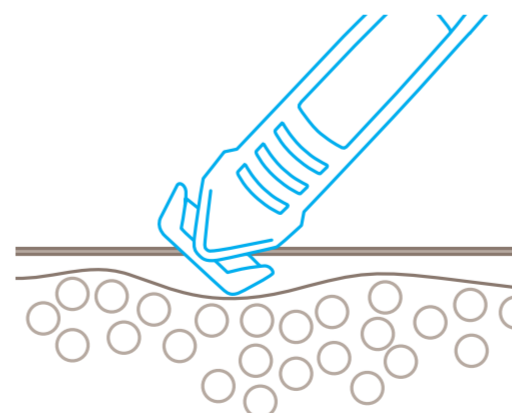
Pierce into cardboard adhesive tape using the **flat edges** on top of the blade head.

PROTECTION OF USER



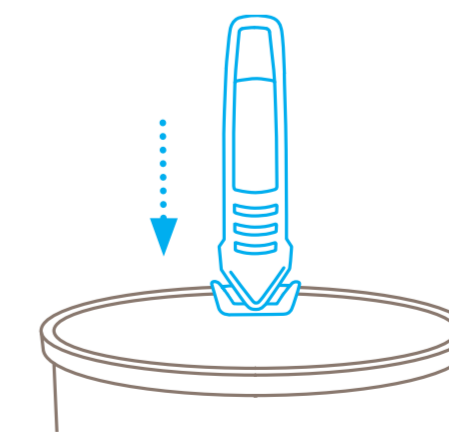
The concealed blade provides maximum protection from **cut injuries**.

PROTECTION OF GOODS



The concealed blade **will not get into contact with your goods** either.

DISPOSAL



The SECUMAX 145 is a disposable knife that can be safely disposed of **with your general waste**.

Please note: To ensure your product always functions flawlessly, regularly remove any impurities. For additional safety, we recommend wearing gloves.